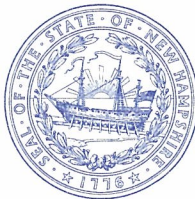


## THE STATE OF NEW HAMPSHIRE

CHAIRMAN  
Amy L. Ignatius

COMMISSIONERS  
Michael D. Harrington  
Robert R. Scott

EXECUTIVE DIRECTOR  
Debra A. Howland



## PUBLIC UTILITIES COMMISSION

21 S. Fruit Street, Suite 10  
Concord, N.H. 03301-2429

TDD Access: Relay NH  
1-800-735-2964

Tel. (603) 271-2431

FAX (603) 271-3878

Website:  
[www.puc.nh.gov](http://www.puc.nh.gov)

NHPUC 23DEC13AM11:21

December 23, 2013

Debra A. Howland, Executive Director  
New Hampshire Public Utilities Commission  
21 South Fruit Street, Suite 10  
Concord, NH 03301

Re: DW 12-306 Rosebrook Water Company, Inc.  
Temporary and Permanent Rate Filing  
Staff Report on Compliance Issues

Dear Ms. Howland:

In a stipulation agreement (the agreement) presented to the Commission at hearing in September, Rosebrook Water Company, Inc. (Rosebrook) agreed to complete efforts with respect to two compliance issues. This letter is to inform the Commission of Rosebrook's progress on these issues.

The first issue concerns the construction of Continuing Property Records (CPR's). On December 3, 2013 Staff reported that Rosebrook had met the first deadline established in the agreement for submitting proposed CPR's by September 30, and that discussions between Staff and Rosebrook had subsequently taken place by teleconference. As of December 3, 2013, however, in Staff's opinion, Rosebrook had not met the October 31 deadline for finalizing its CPR's. On December 6, the company submitted revised CPR's which were to address issues raised by Staff. Staff has not yet had the opportunity to review this submission in detail, but Staff believes that the bulk of the work has been completed and that only small adjustments may now be required to finalize the CPR's.

The second compliance issue surrounds meter by-passes. Staff filed a letter in this docket on December 12 indicating that Rosebrook had failed to meet the agreed-upon deadline of November 30 for eliminating these by-passes. As of that date only five had been removed. On December 16 Staff received a letter along with photographs submitted as evidence that the nine by-passes had been removed or disconnected. That letter and the photographs are attached to this letter. Staff believes that the by-passes are now corrected and that this issue is resolved.

If the Commission desires additional information regarding these matters, please let me know.

Sincerely,

A handwritten signature in blue ink, appearing to read "Mark A. Naylor". The signature is fluid and cursive, with a large initial "M" and a stylized "N".

Mark A. Naylor  
Director, Gas & Water Division

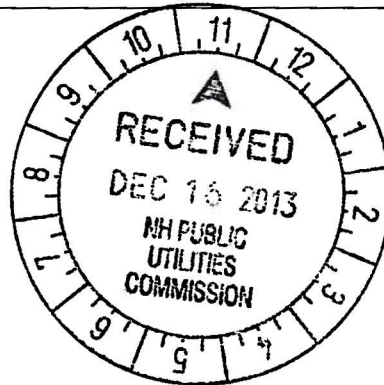
Attachment

cc: Docket-Related Service List

# Rosebrook Water Company, Inc.

December 13, 2013

New Hampshire Public Utilities Commission  
Mr. Mark Naylor  
21 S. Fruit Street, Suite 10  
Concord, NH 03301



Mr. Naylor,

As the Compliance Officer for Rosebrook Water Co. Inc., I certify that the nine meter bypasses referenced in the stipulation agreement for DW 12-306 Rosebrook Water Company, Inc. Permanent Rate Proceeding and located at the Mount Washington Hotel properties listed below have been permanently removed or disconnected. The following is a listing of the bypasses:

- 1 Ski Area Base Lodge
- 2 Ski Area Maintenance Building
- 3 Ski Area First Aid Building
- 4 Hotel Carpenter Shop
- 5, 6 Spa (two locations)
- 7, 8, 9 Cabana (three locations)

Before and after photos are enclosed for your reference. It pleases the company and trust you as well to know that these items are resolved. Thank you for your assistance with this matter to help the company bring this to a resolution.

Nancy Oleson

A handwritten signature in cursive script that reads "Nancy Oleson".

Rosebrook Water Co. Inc  
603-278-4491  
[noleson@omnihotels.com](mailto:noleson@omnihotels.com)

*Enclosures: Before and after photos*

**310 Mount Washington Hotel Rd.  
Bretton Woods, NH 03575  
(603) 278-4491**

**List of meter bypasses required to be removed.**

<b>Photo #</b>	<b>Location</b>	<b>Bypass information</b>	<b>Solution</b>
1	Ski area base lodge.	2" bypass around meter	Bypass section removed.
2	Ski area Maintenance	in pit where meter is	Pipe section removed
3	Ski first aid building	Hose spigot before meter	Spigot end removed
4	MW Hotel caprenter shop	4" bypass around meter	Section including backflow preventer removed
5	Spa	bypass around meter	Section of pipe removed
6	Spa	water line to boilers before meter	Section of pipe removed
7	Cabana	bypass around meter	Pipe section removed and saudered
8	Cabana	Hose spigot before meter	Capped and saudered
9	Cabana	2" line before meter	Spigot removed





valve closed

Bypass  
at ski Area  
Base Lodge

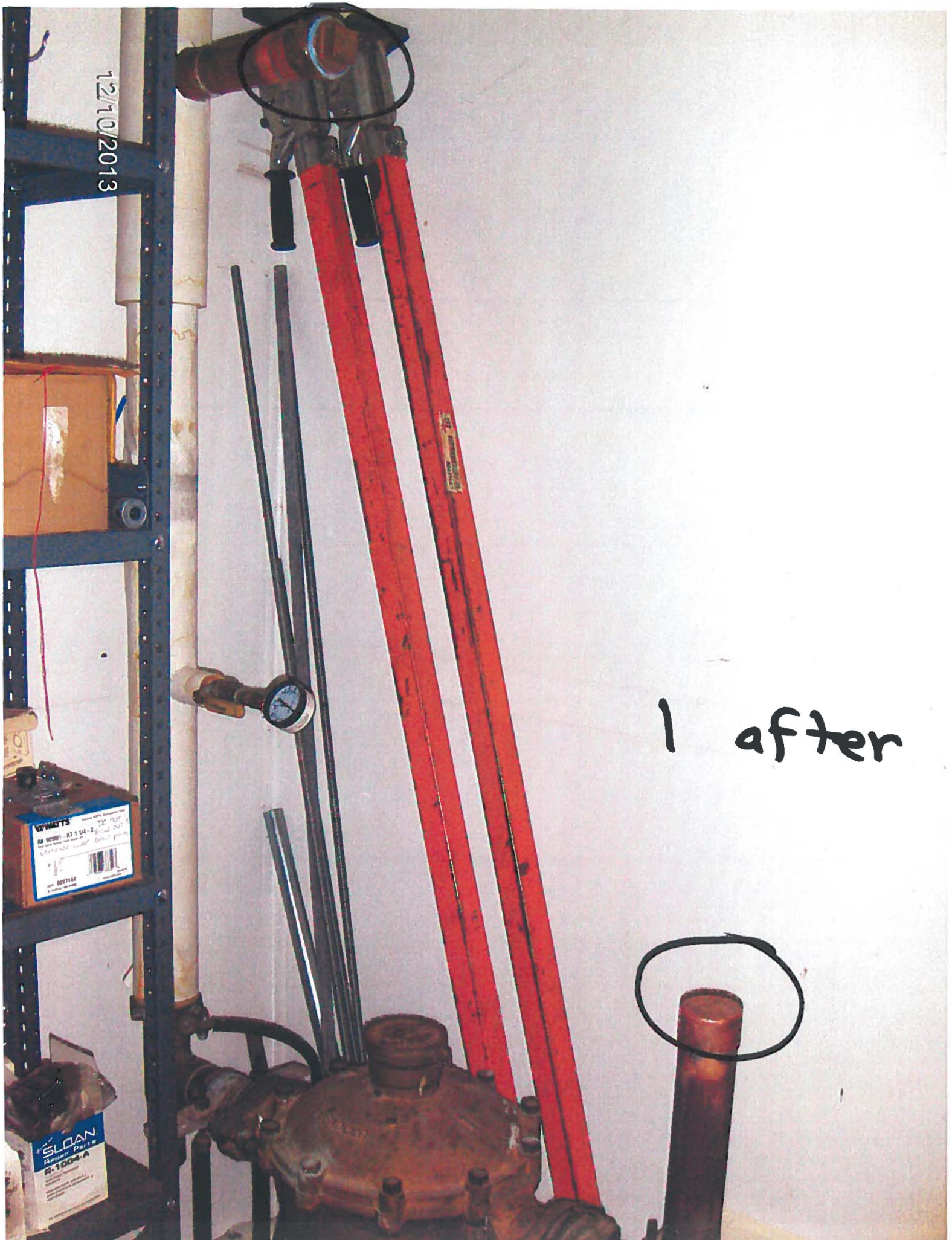
meter

1  
Before



12/10/2013

1 after



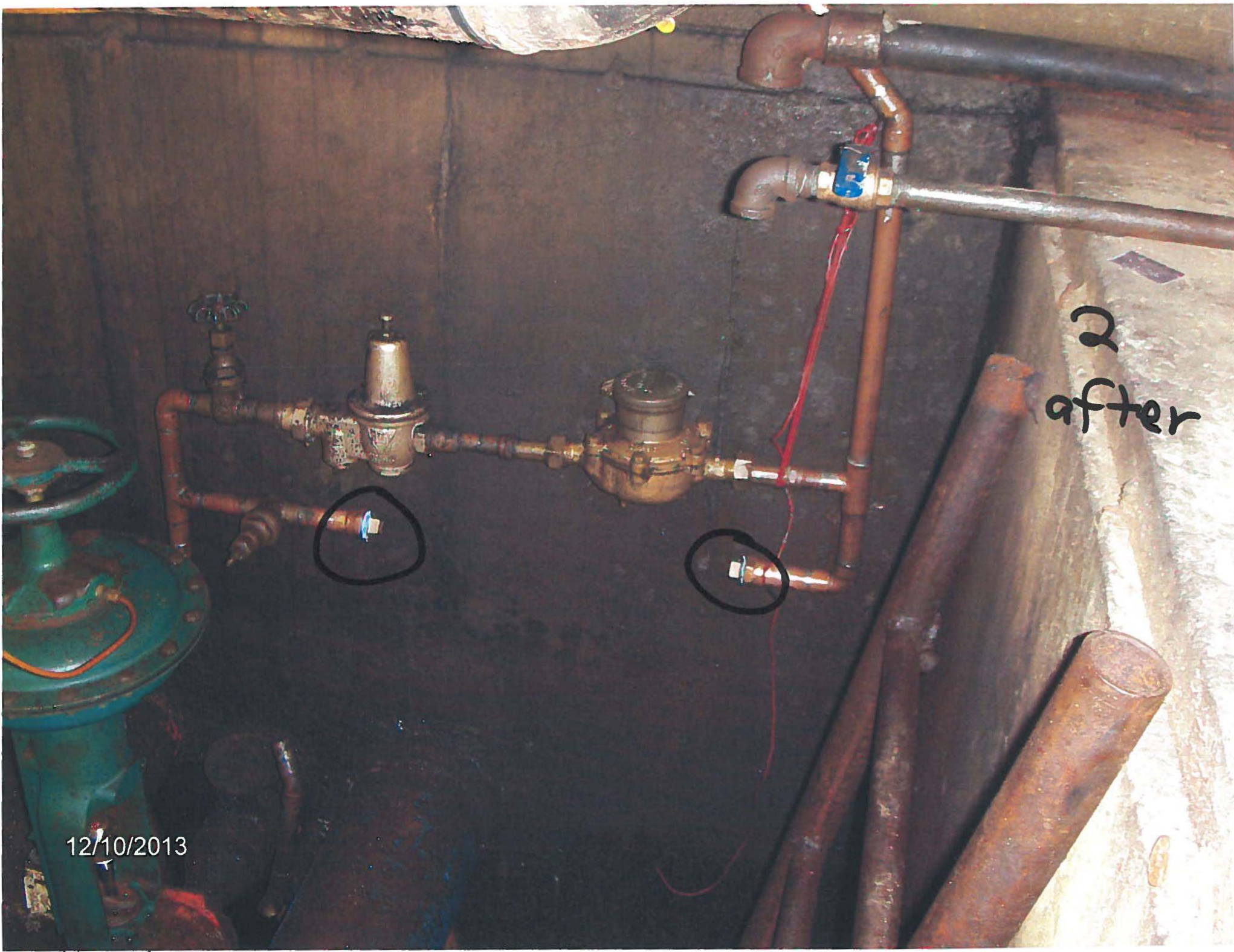




Bypass

2  
Before



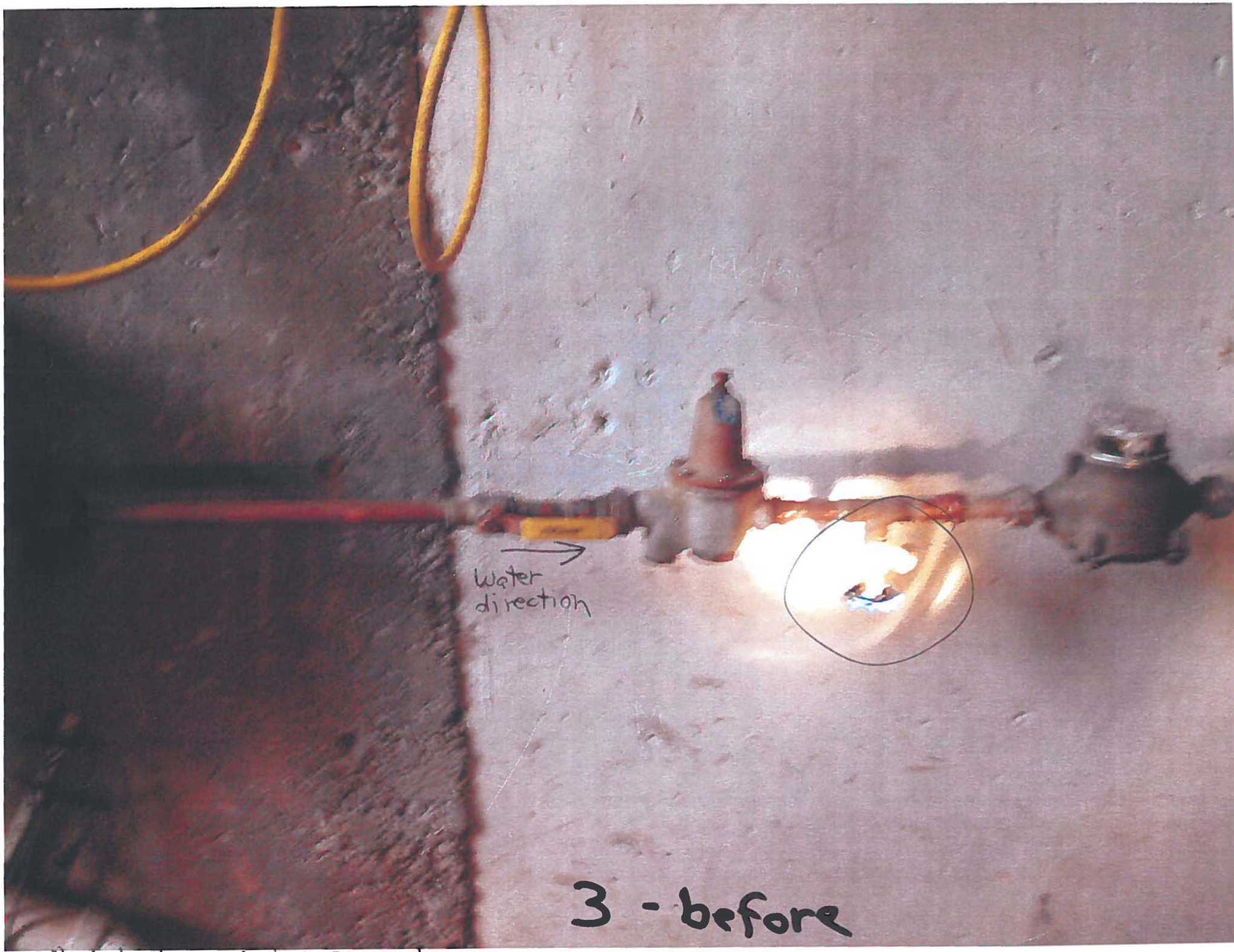


2  
after

12/10/2013

sf. mist

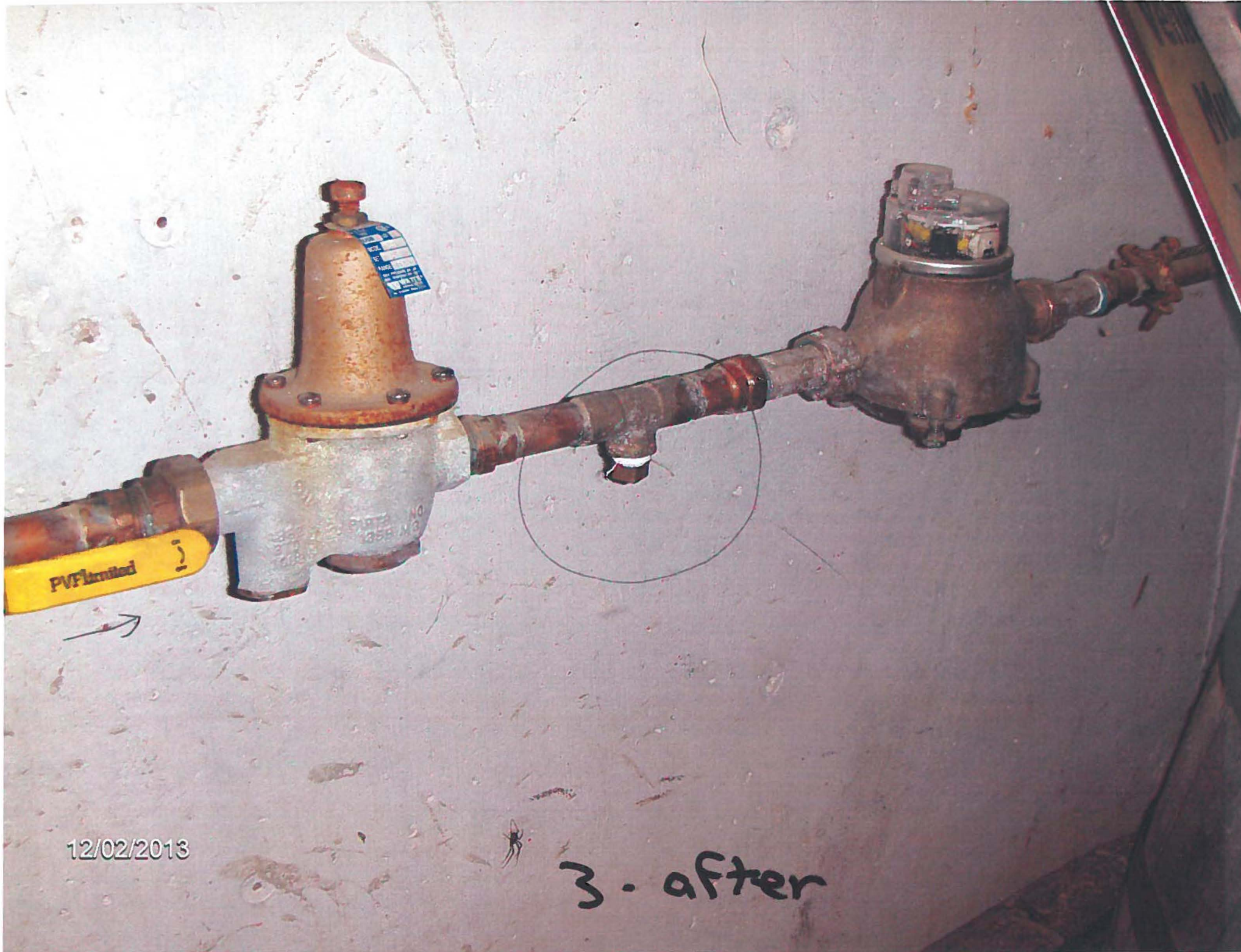




Water  
direction

3 - before





12/02/2013

3 - after



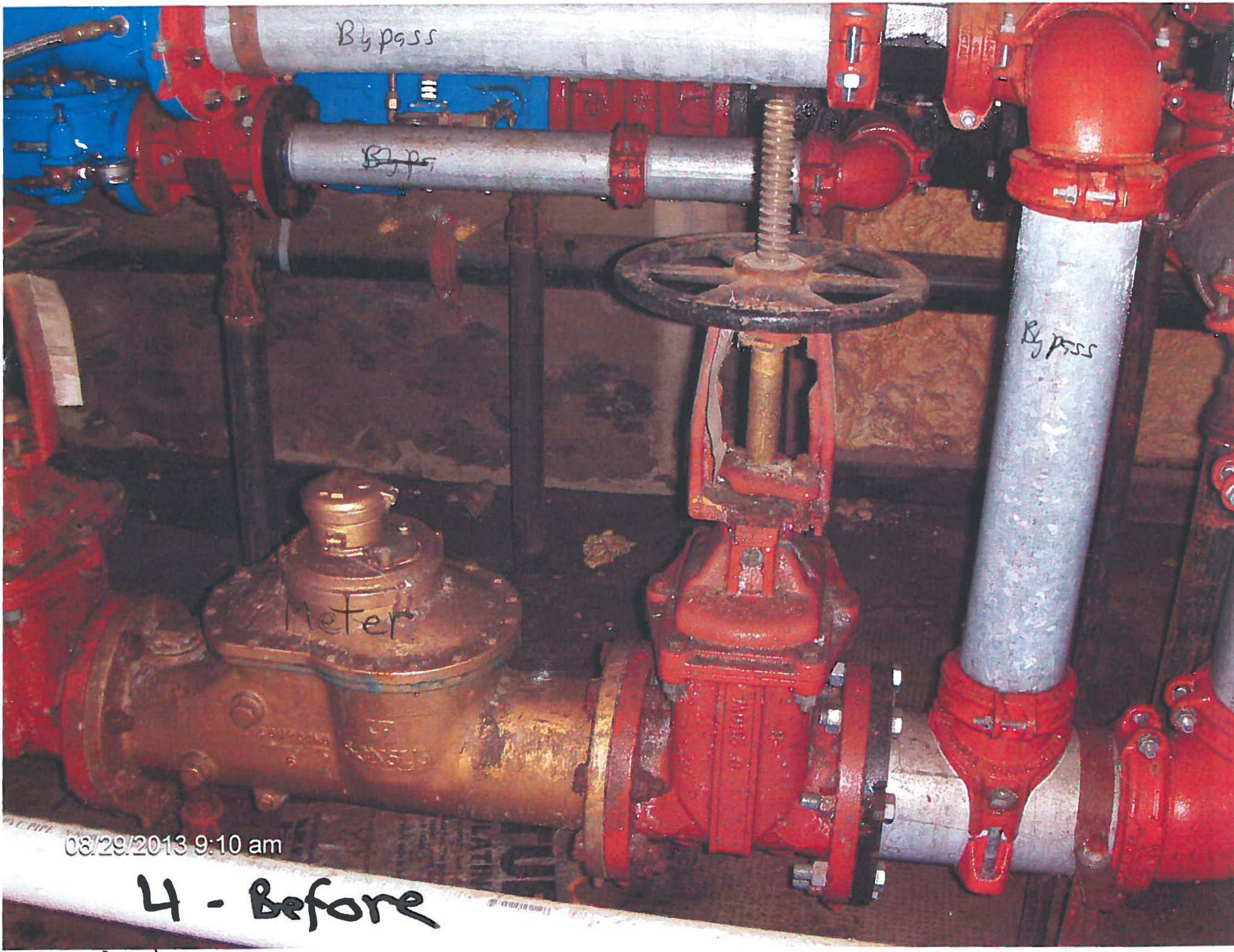


08/29/2013 9:12 am

Condenser close

4 - Before





Bypass

Bypass

Bypass

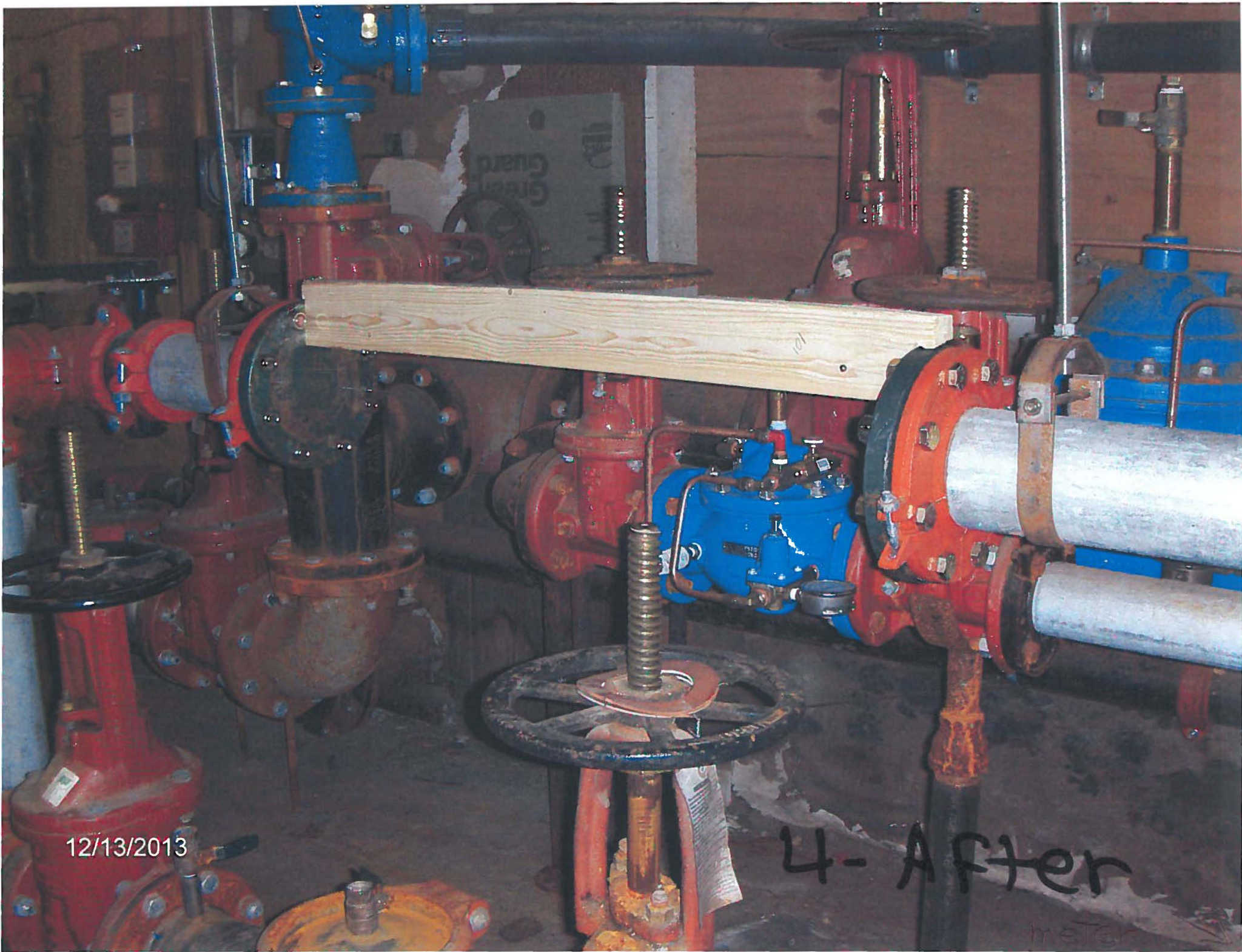
Meter

08/29/2013 9:10 am

4 - Before

08/29/2013 9:10 am





12/13/2013

4- After

meter

Section removed





08/29/2013 8:36 am

5 - Before

One - Blue is water. One - Gas

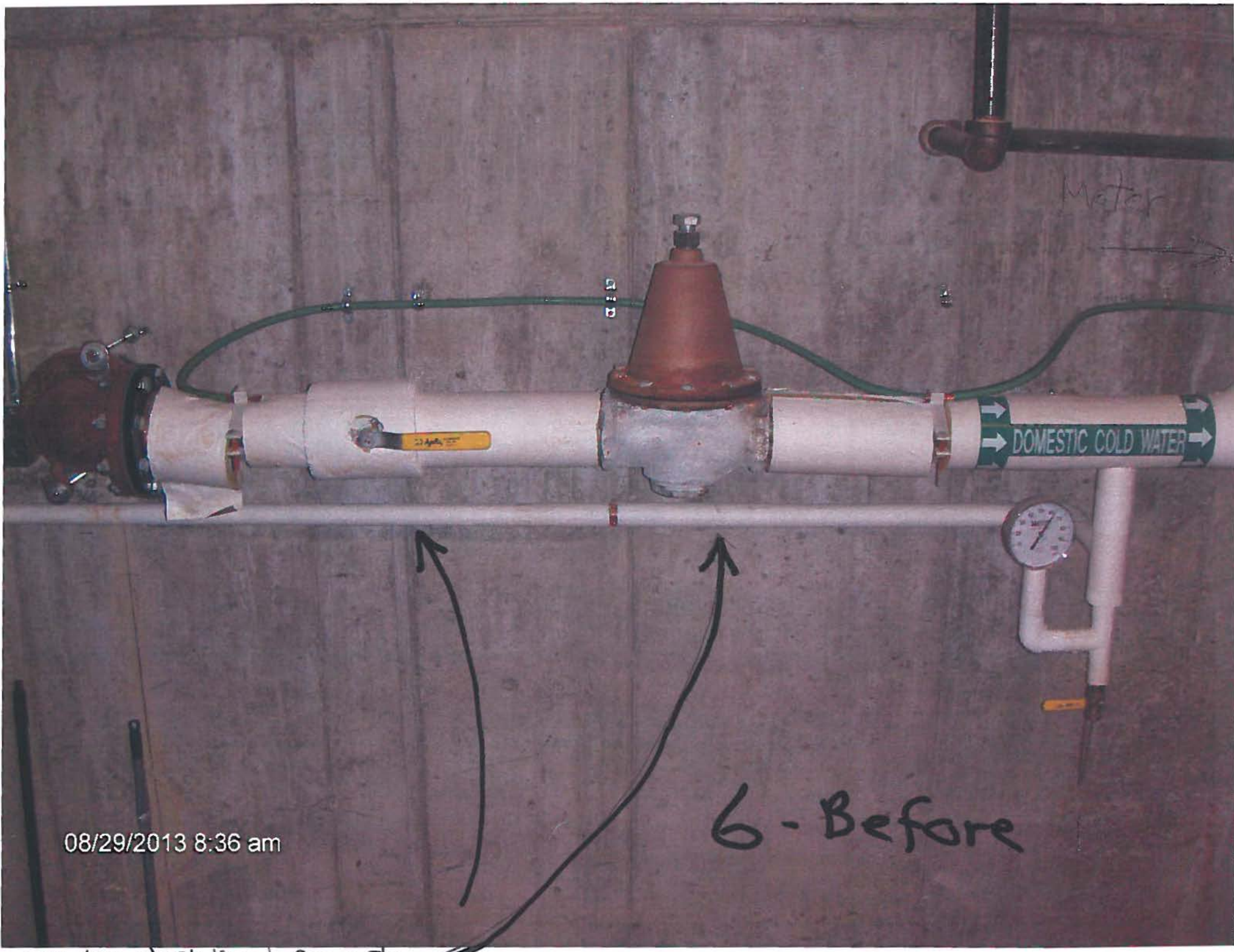




12/13/2013

5 - After





Meter

DOMESTIC COLD WATER

6 - Before

08/29/2013 8:36 am

no. 1 in water like before



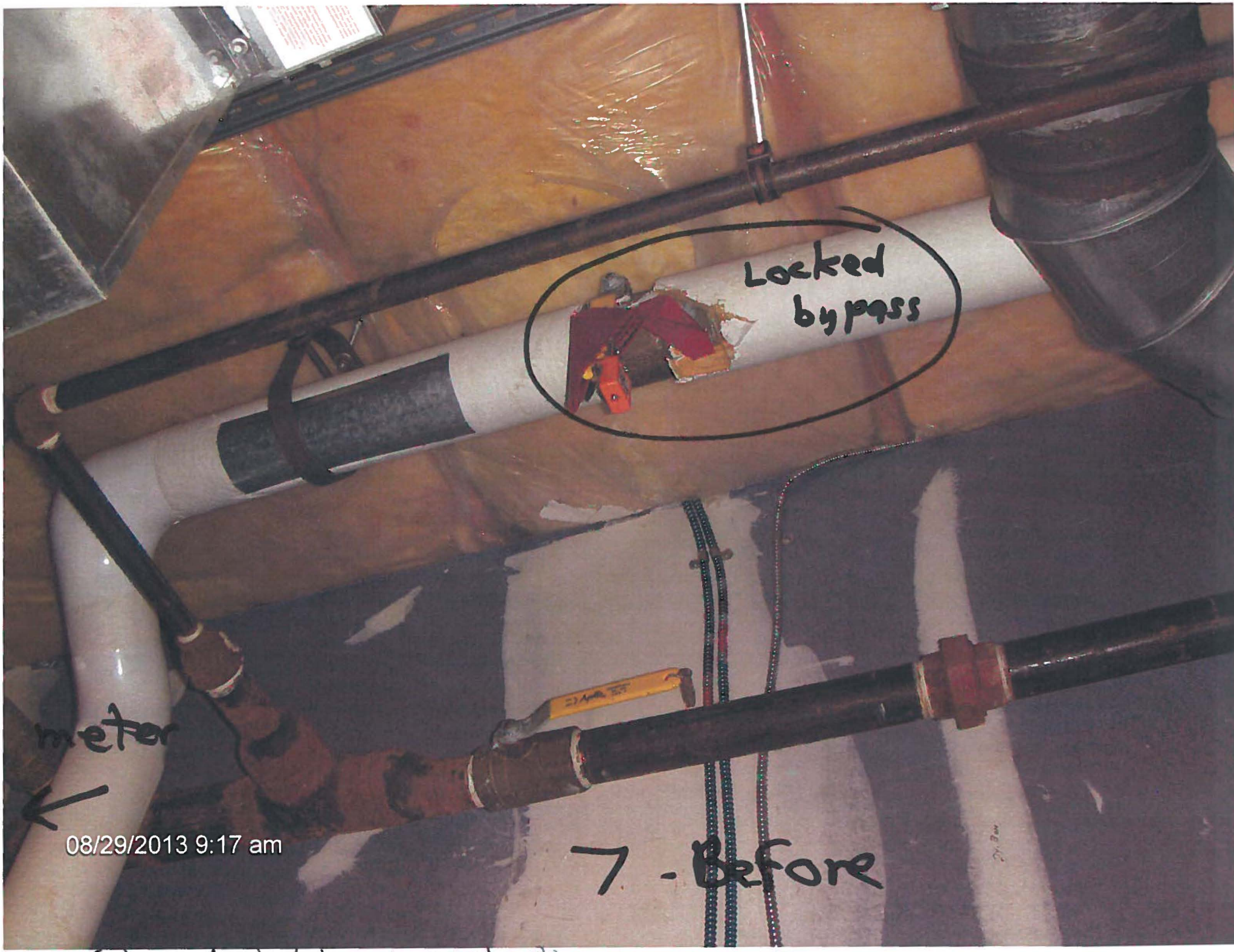
6 - After



Spa  
12/02/2013

Portion of line between 1 and 2





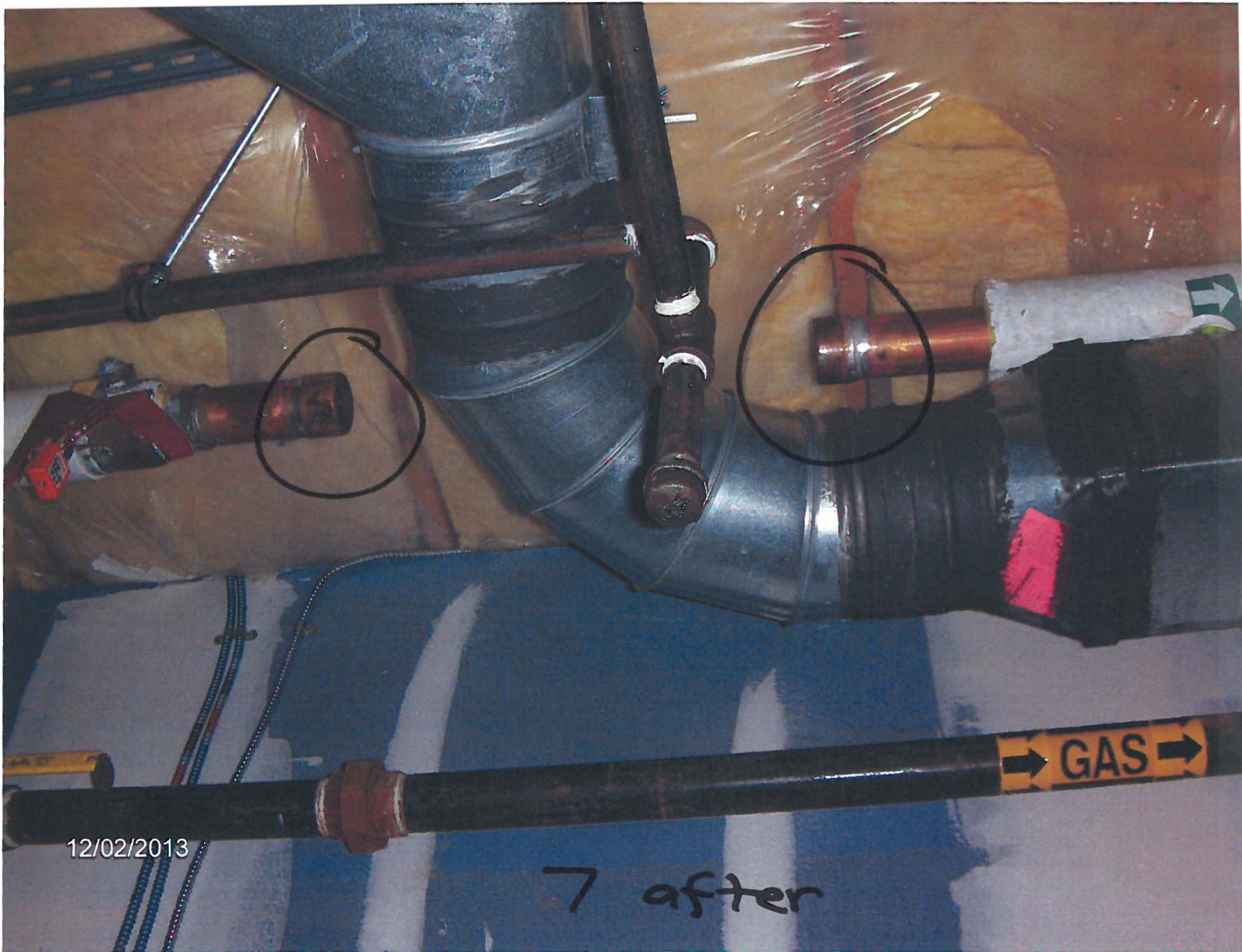
Locked  
bypass

meter

08/29/2013 9:17 am

7 - Before



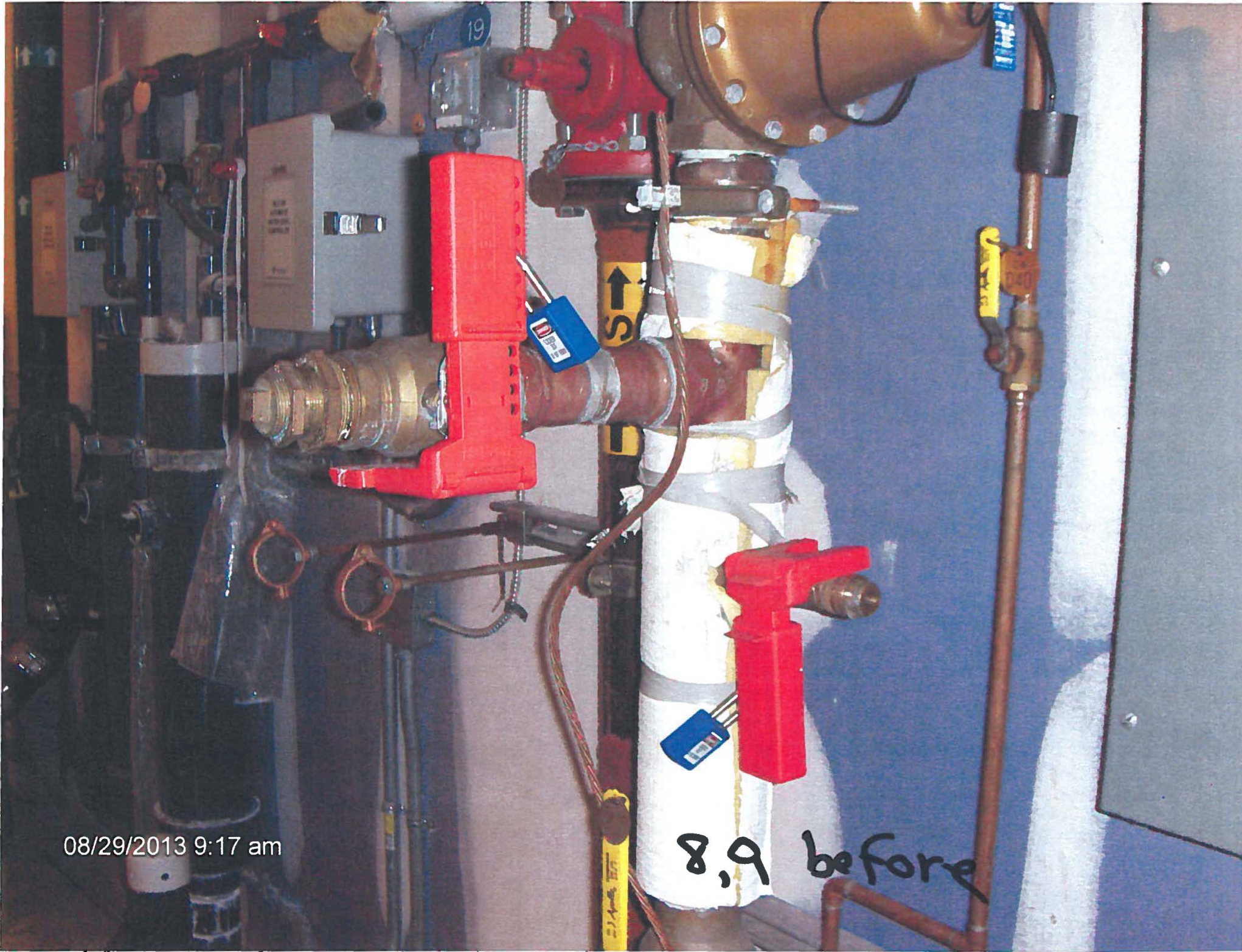


12/02/2013

7 after

Cehana - section removed and replaced

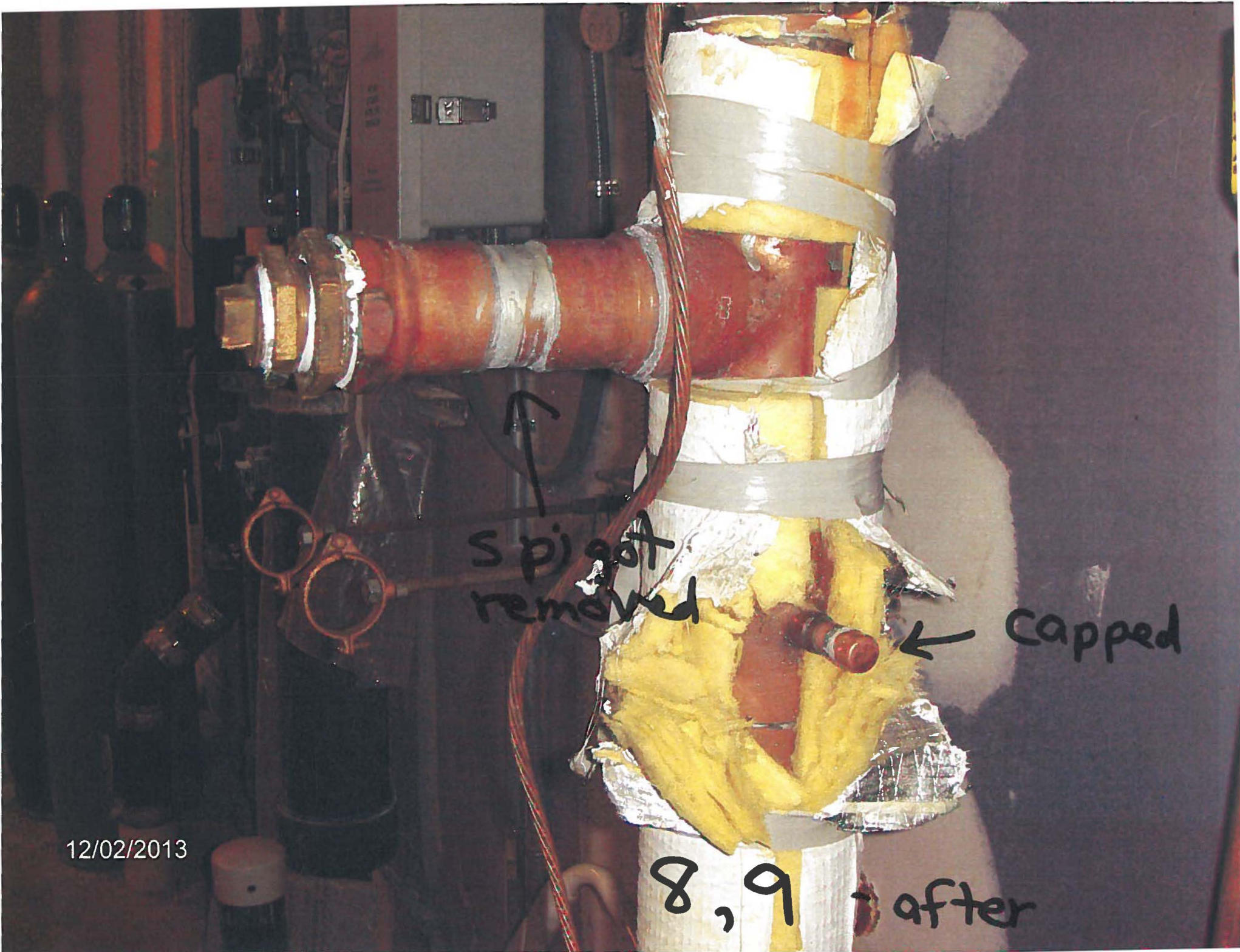




08/29/2013 9:17 am

8,9 before





12/02/2013

8,9 - after

Cabana